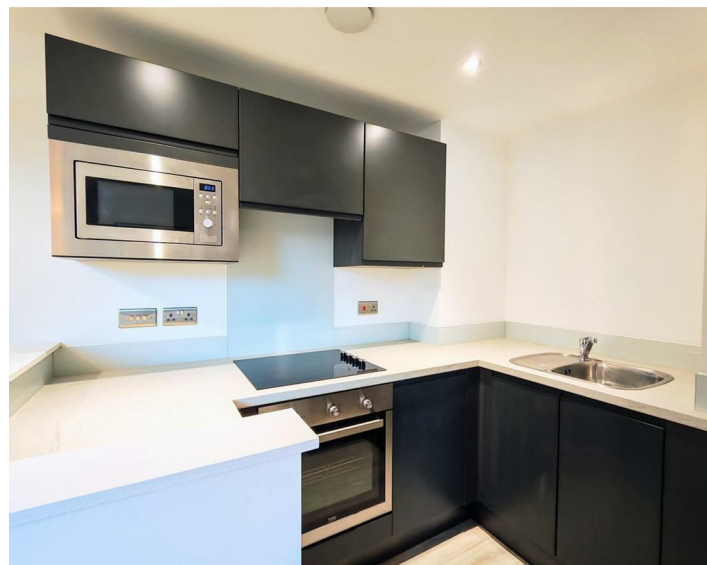




Apt 206, Baltic View 25 Norfolk Street, Liverpool, L1 0BE
£875 Per Month

www.
cityresidential
.co.uk



About the Property

Move In Ready!!!

City Residential are delighted to present this stylish one bedroom apartment in the sought-after Baltic View development, one of Liverpool's most vibrant and popular locations.

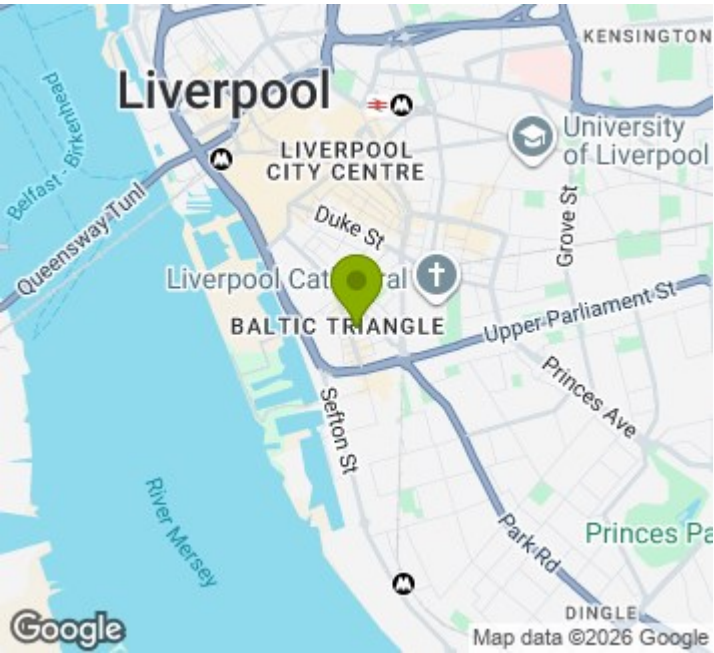
The apartment is offered fully furnished and briefly comprises: a bright open-plan living and dining area with a fully fitted kitchen, a double bedroom, a modern bathroom with shower unit, and a utility/storage cupboard housing a washing machine.

The development benefits from lift access to all floors. Please note, parking is not included.

Baltic View is ideally located just a 10-minute walk from the heart of the city centre, with easy access to shops, bars, restaurants and the bustling waterfront.

Don't miss out on this fantastic opportunity – contact our office today for more information or to arrange a viewing.

- Great Location
- Close To Baltic Market
- Move In Ready
- Council Tax Band - A
- EPC Rating - B
- Deposit - £1009.00



Energy Efficiency Rating

| | Current | Potential |
|---|-------------------------|-----------|
| Very energy efficient - lower running costs | | |
| (92 plus) A | | |
| (81-91) B | | |
| (69-80) C | | |
| (55-68) D | | |
| (39-54) E | | |
| (21-38) F | | |
| (1-20) G | | |
| Not energy efficient - higher running costs | | |
| England & Wales | EU Directive 2002/91/EC | |

82

82

